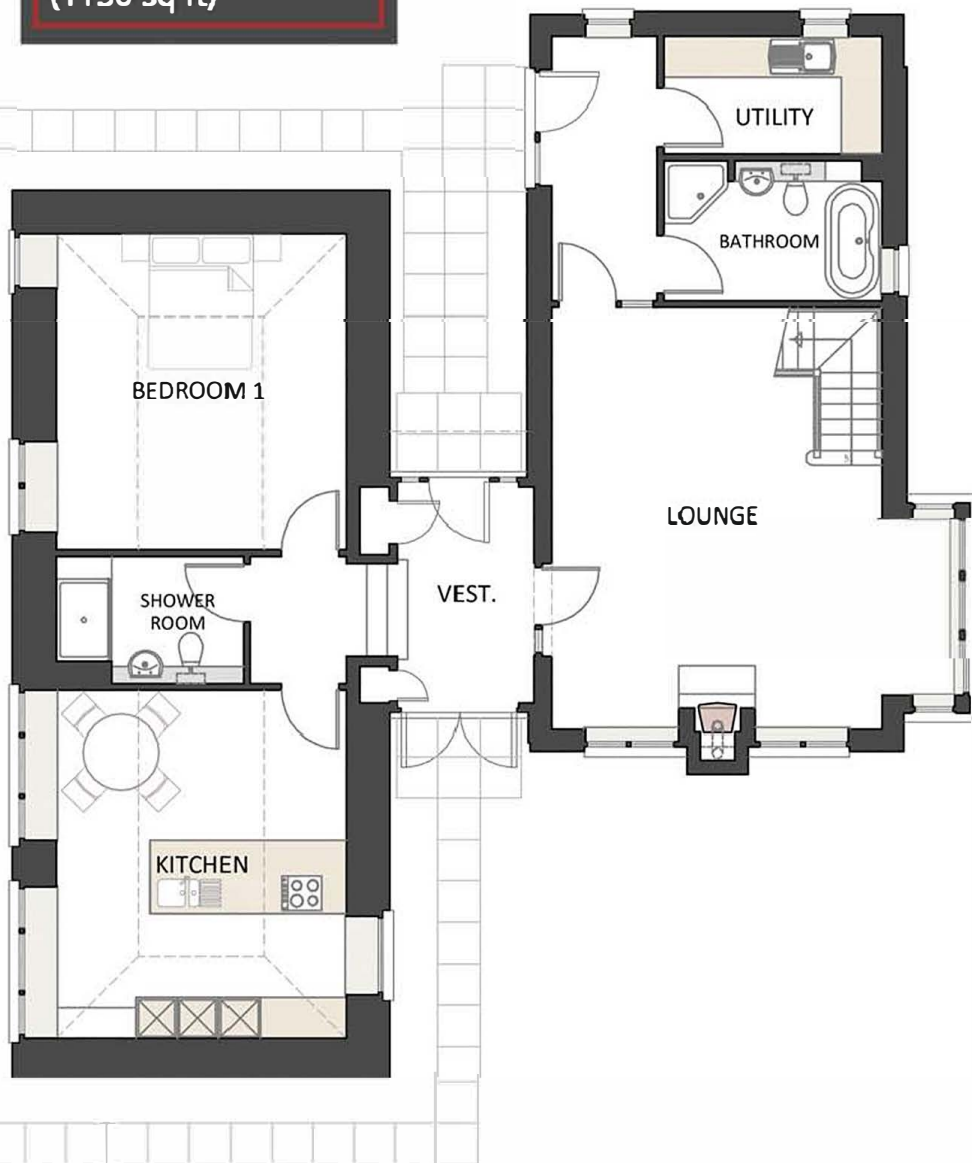
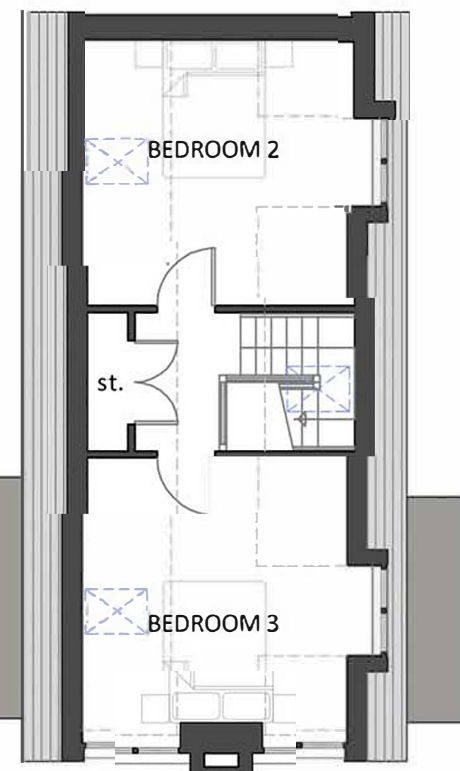
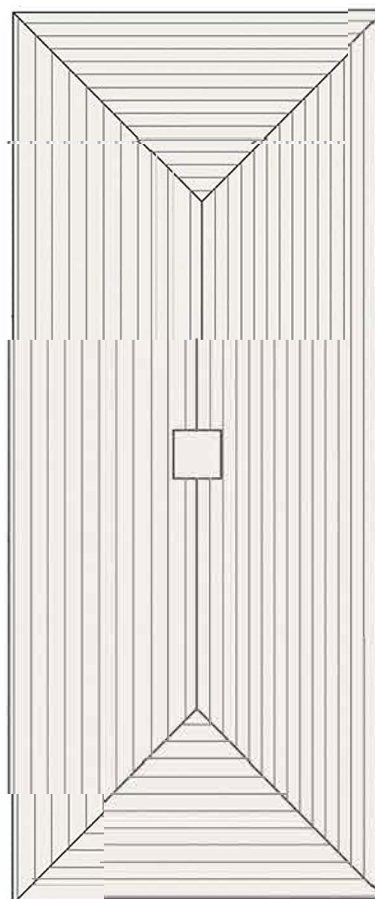


# Plot 7

**Ground Floor:**  
Total area 106.9 sq m  
(1150 sq ft)



**First Floor:**  
Total area 36.1 sq m  
(389 sq ft)



## 3 - Bedroom Steading Conversion

Ground Floor	Metres	Feet
Kitchen/Dining	5.04 x 4.23	16' 6" x 13' 9"
Lounge	6.12 x 5.53	20' 1" x 18' 1"
Bedroom 1	4.58 x 4.23	15' 0" x 13' 9"
Shower Room	1.85 x 1.90	6' 1" x 6' 2"
Bathroom	2.04 x 3.17	6' 7" x 10' 4"
Utility Room	1.70 x 3.17	5' 6" x 10' 4"

First Floor	Metres	Feet
Bedroom 2	3.84 x 3.85	12' 6" x 12' 6"
Bedroom 3	4.20 x 3.85	13' 8" x 12' 6"