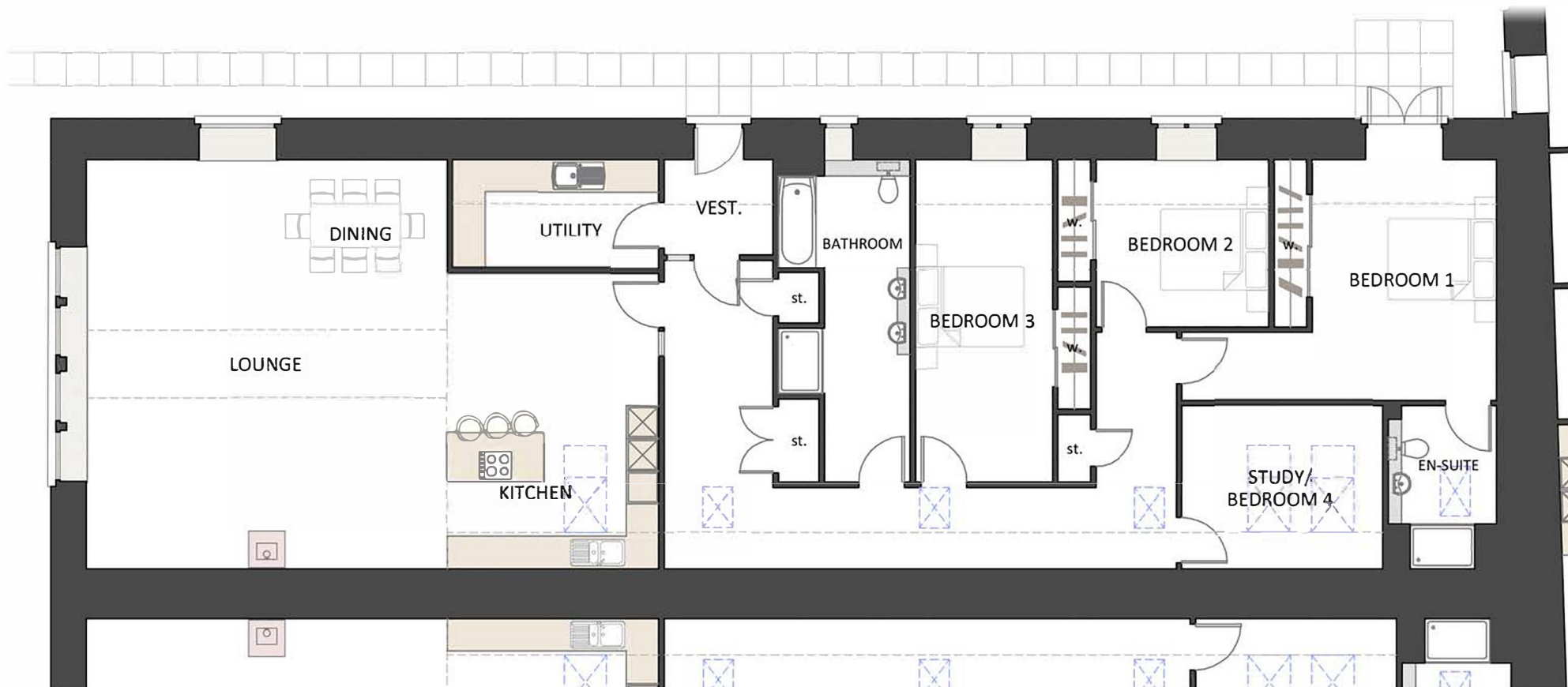


Plot 5



Ground Floor: Total area 193.8 sq m (2086 sq ft)

3 - Bedroom Steading Conversion

Ground Floor	Metres	Feet
Kitchen/Dining/Lounge	10.49 x 7.54	34' 4" x 24' 7"
Utility Room	2.00 x 3.80	6' 6" x 12' 5"
Study	3.70 x 3.00	12' 1" x 9' 8"
Bedroom 1	3.40 x 4.44	11' 2" x 14' 6"
En Suite	1.75 x 2.18	5' 7" x 7' 2"
Bedroom 2	3.20 x 3.09	10' 5" x 10' 1"
Bedroom 3	2.52 x 5.94	8' 3" x 19' 5"
Bathroom	1.58 x 5.94	5' 2" x 19' 5"