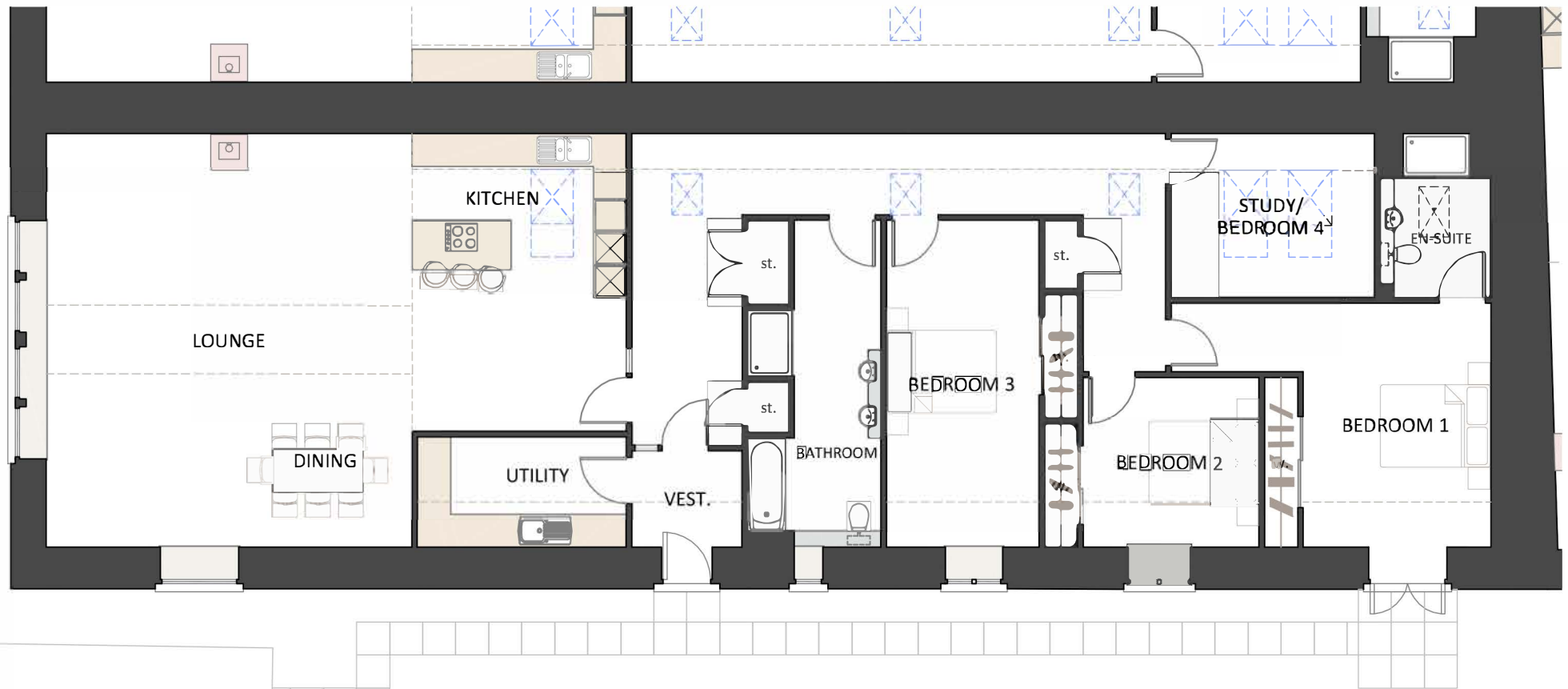


Plot 4



Ground Floor: Total area 195.8 sq m (2107 sq ft)

3 - Bedroom Steading Conversion

Ground Floor

	Metres	Feet
Kitchen/Dining/Lounge	10.54 x 7.54	34' 6" x 24' 7"
Utility Room	2.00 x 3.80	6' 6" x 12' 5"
Bathroom	5.94 x 1.58	19' 5" x 5' 2"
Study	3.70 x 3.00	12' 1" x 9' 8"
Bedroom 1	3.42 x 4.44	11' 2" x 14' 6"
En Suite	2.02 x 2.18	6' 6" x 7' 2"
Bedroom 2	3.20 x 3.09	10' 5" x 10' 1"
Bedroom 3	2.78 x 5.94	9' 1" x 19' 5"