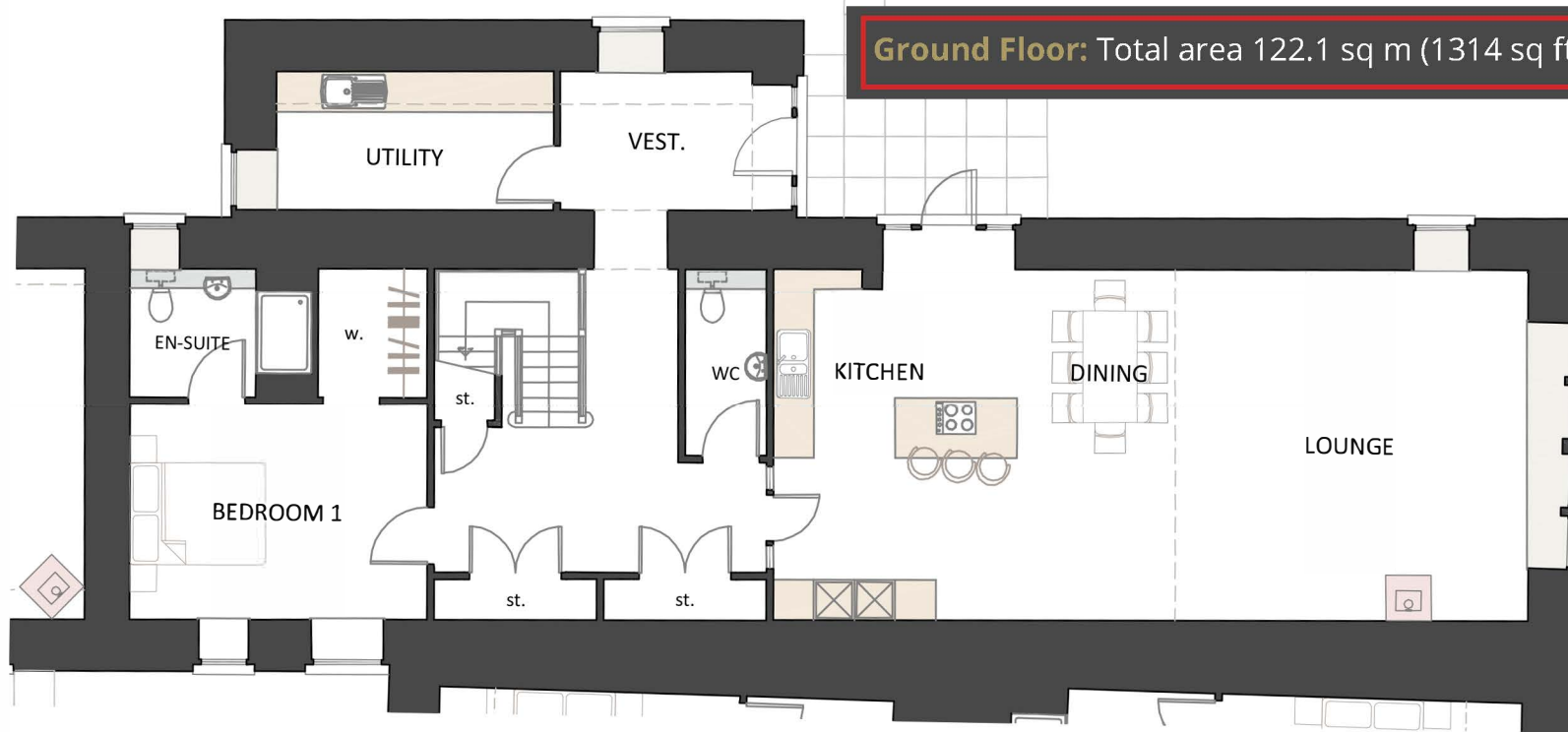


Plot 3

First Floor: Total area 72.8 sq m (783 sq ft)



Ground Floor: Total area 122.1 sq m (1314 sq ft)



4 - Bedroom Steading Conversion

Ground Floor

Kitchen/Dining/Lounge
11.15 x 5.19 Metres
36' 6" x 17' 0"

Bedroom 1
4.40 x 3.19 Metres
14' 4" x 10' 5"

En Suite
1.86 x 1.9 Metres
6' 1" x 6' 2"

W.C.
2.77 x 1.2 Metres
9' 1" x 3' 9"

First Floor

Bedroom 2
4.40 x 5.19 Metres
14' 4" x 17' 0"

Bedroom 3
3.11 x 3.09 Metres
10' 2" x 10' 1"

Bedroom 4
3.20 x 5.19 Metres
10' 2" x 17' 0"

Bathroom
2.00 x 3.09 Metres
6' 6" x 10' 1"