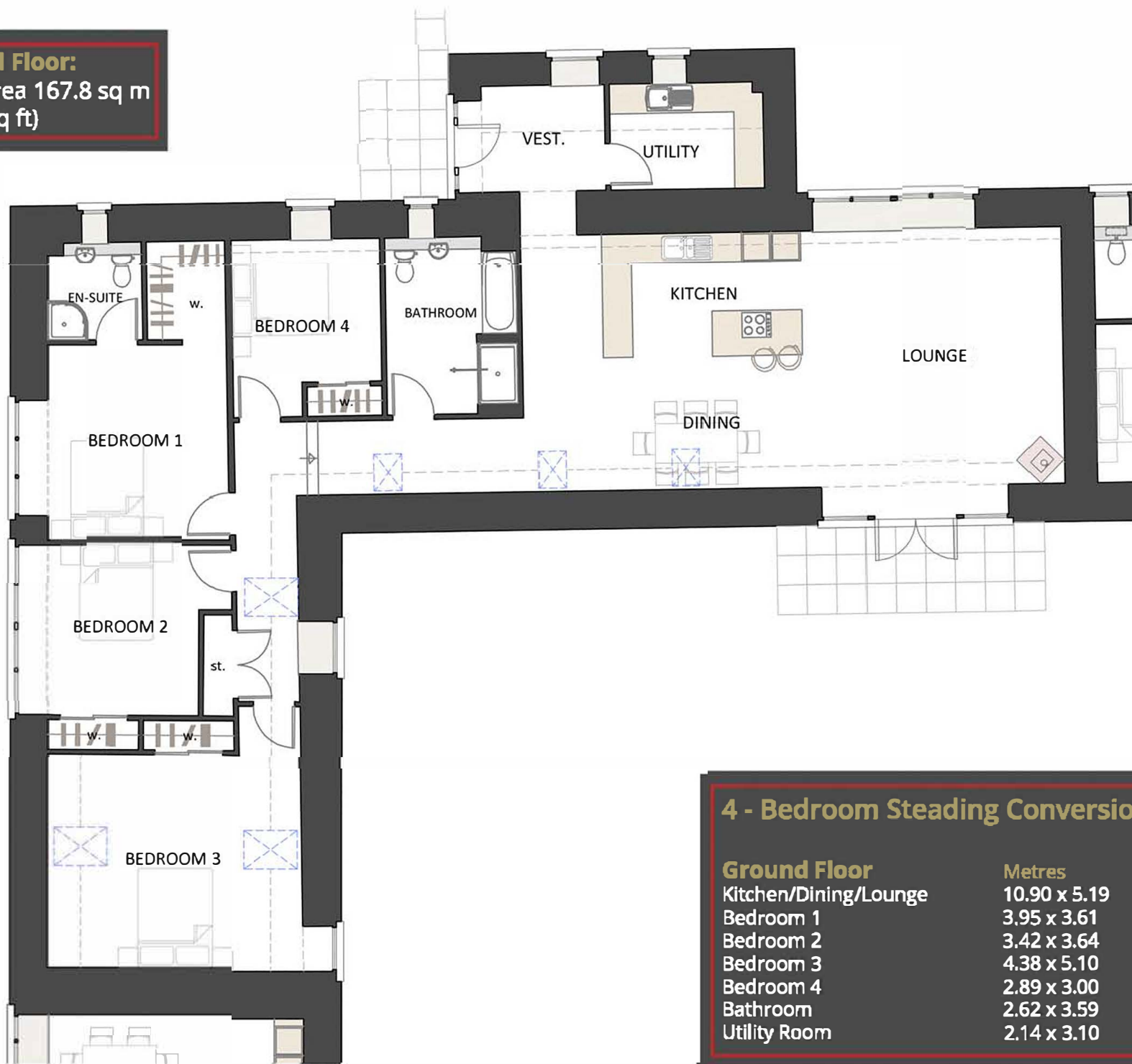


Plot 2

Ground Floor:
Total area 167.8 sq m
(1806 sq ft)



4 - Bedroom Steading Conversion

| Ground Floor | Metres | Feet |
|-----------------------|--------------|-----------------|
| Kitchen/Dining/Lounge | 10.90 x 5.19 | 35' 8" x 17' 0" |
| Bedroom 1 | 3.95 x 3.61 | 13' 0" x 11' 8" |
| Bedroom 2 | 3.42 x 3.64 | 11' 2" x 11' 9" |
| Bedroom 3 | 4.38 x 5.10 | 14' 4" x 16' 7" |
| Bedroom 4 | 2.89 x 3.00 | 9' 5" x 9' 8" |
| Bathroom | 2.62 x 3.59 | 8' 6" x 11' 8" |
| Utility Room | 2.14 x 3.10 | 7' 0" x 10' 2" |