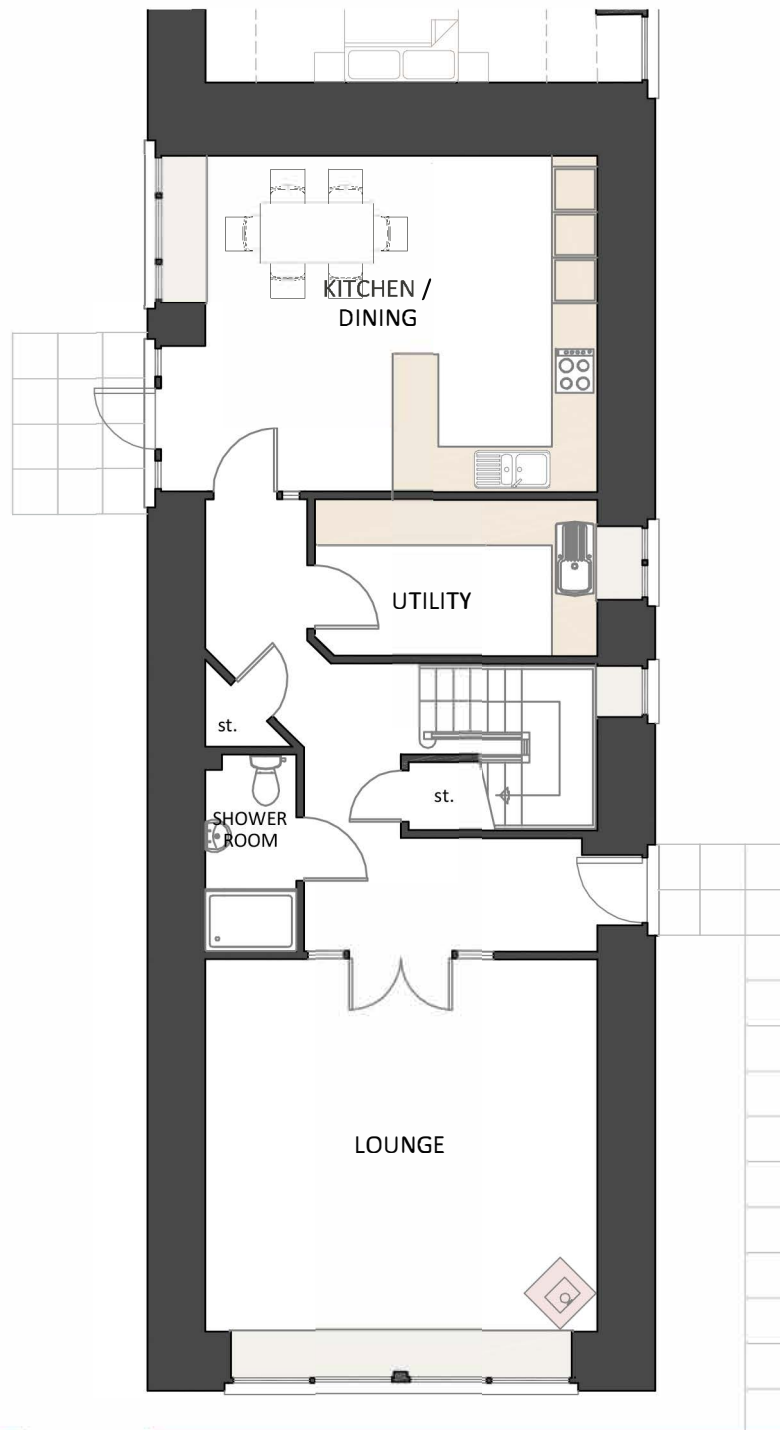


Plot 1



First Floor: Total area 73.2 sq m (787 sq ft)



Ground Floor: Total area 80.4 sq m (865 sq ft)

3 - Bedroom Steading Conversion

Ground Floor
Kitchen/Dining
4.45 x 5.18 Metres
14' 6" x 16' 8"

Lounge
4.92 x 5.18 Metres
16' 1" x 16' 8"

Utility Room
2.30 x 3.73 Metres
7' 5" x 12' 2"

Shower Room
2.60 x 1.20 Metres
8' 5" x 3' 9"

First Floor
Bedroom 1
4.42 x 5.18 Metres
14' 5" x 17' 0"

Bedroom 2
3.00 x 3.20 Metres
9' 8" x 10' 5"

Bedroom 3
3.52 x 5.18 Metres
11' 5" x 17' 0"

Bathroom
2.00 x 2.20 Metres
6' 6" x 7' 2"